



**\*\* PRESENTED TO A VERY HIGH STANDARD \*\*** A most impressive four bedroom, three storey town house which has the benefit of a sunny rear garden. This property forms part of the modern Headway development which was built by Taylor Wimpey Homes, with this property being built to their popular 'Halyard' design. It should be economical to manage having gas fired central heating, uPVC double glazing and was insulated to modern standards at the time of construction. As the property is spread over three floors it provides extremely spacious living accommodation which makes an ideal family home. The floor plan briefly comprises: long entrance hall, cloakroom/WC which is fitted with a white suite, spacious lounge located to the rear of the property with uPVC double glazed French doors and an impressive kitchen/breakfast room which is fitted with modern white units and includes a recently replaced integrated oven, hob and extractor. Located to the first floor are bedrooms two and four, plus a superb family bathroom/WC which is fitted with a white suite. To the second floor is a large master bedroom which has fitted sliding wardrobes and an outstanding en-suite shower room/WC which has a double shower cubicle, plus bedroom three which has French doors leading to a 'Juliet' style balcony. Externally, to the front of the property is a small garden area, whilst to the rear of the property is a low maintenance garden which is paved with soft lighting and enjoys a sunny aspect. A rear garage is located to the side of the property and is accessed via a rear communal courtyard. Fitted carpets and blinds are included in the asking price. Internal viewing is a must to fully appreciate this beautifully presented home.

**Raby Road, Hartlepool, TS24 8HF**

**4 Bed - House - Townhouse**

**£145,000**

**EPC Rating: C**

**Council Tax Band: C**

**Tenure: Freehold**



**SMITH &  
FRIENDS**  
ESTATE AGENTS



# Raby Road, Hartlepool, TS24 8HF



## GROUND FLOOR

### ENTRANCE HALLWAY

Composite entrance door, staircase to first floor, built-in cloaks cupboard, single radiator.

### DOWNSTAIRS TOILET

Fitted with a two piece white suite comprising: wash hand basin, white tiling to splashback, close coupled WC, single radiator, extractor fan.

### DINING KITCHEN

**16'9 x 7'8 (5.11m x 2.34m )**

Fitted with a range of modern white base, wall and drawer units with 'butchers block' style working surfaces in an 'L' shaped layout incorporating inset one and half single drainer stainless steel sink unit with mixer tap, built-in four ring gas hob with recently replaced electric oven below, illuminating extractor above, matching cupboard housing wall mounted Ideal Logic gas fired central heating boiler, attractive 'mosaic' effect tiled splashback, uPVC double glazed window, single radiator, single inset spotlights to ceiling.

### LOUNGE (rear)

**13'8 x 12'10 (4.17m x 3.91m)**

Two single radiators, uPVC double glazed French doors with matching side screens.

## FIRST FLOOR; LANDING

### BEDROOM (rear)

**12'11 x 12'10 (3.94m x 3.91m)**

uPVC double glazed window, single radiator.

### BEDROOM (front)

**11' x 6'3 (3.35m x 1.91m)**

uPVC double glazed window, single radiator.

### FAMILY BATHROOM/WC

Fitted with a three piece white suite comprising: panelled bath, pedestal wash hand basin, close coupled WC, impressive tiling to splashback, single radiator, extractor fan.

## SECOND FLOOR; LANDING

### BEDROOM

**15'5 x 12'10 (4.70m x 3.91m)**

Built-in mirror fronted sliding wardrobes to one wall, uPVC double glazed window, single radiator.

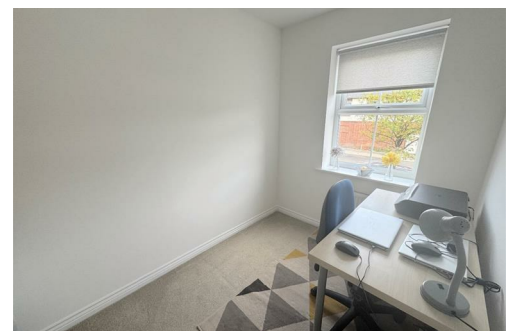
### EN-SUITE (rear)

Fitted with a three piece white suite comprising: double shower cubicle with space saving folding door, chrome mains shower fitting, pedestal wash hand basin, close coupled WC, attractive tiling to splashback, single radiator, extractor fan.

### BEDROOM

**11'8 x 9'2 (3.56m x 2.79m)**

Single radiator, built-in airing cupboard housing hot water cylinder, uPVC double glazed French doors leading to a 'Juliet' style balcony.



# Raby Road, Hartlepool, TS24 8HF



## EXTERNALLY

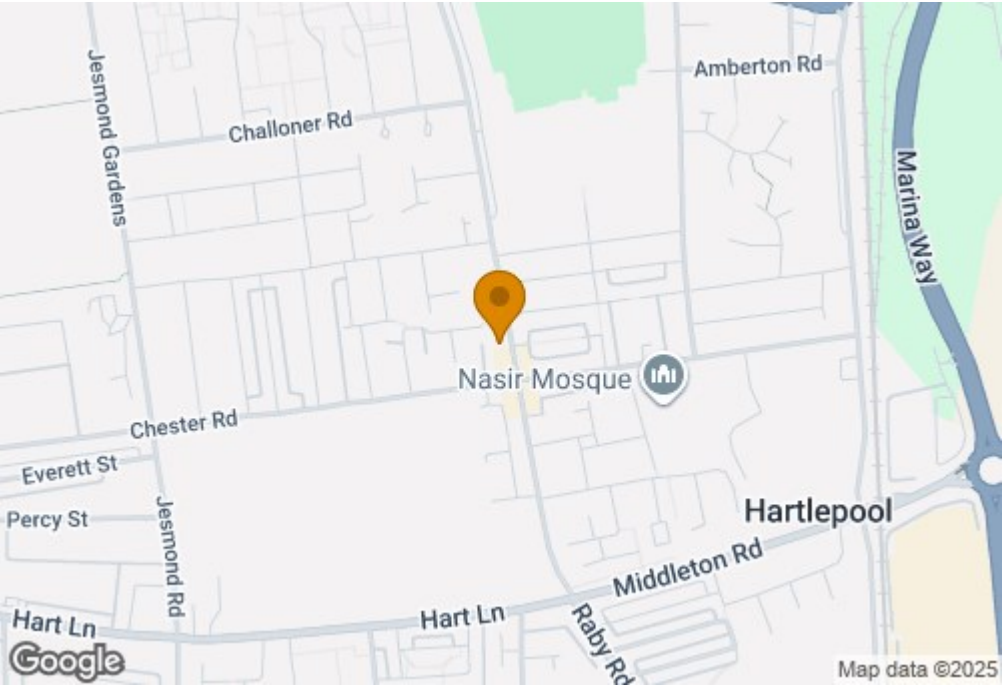
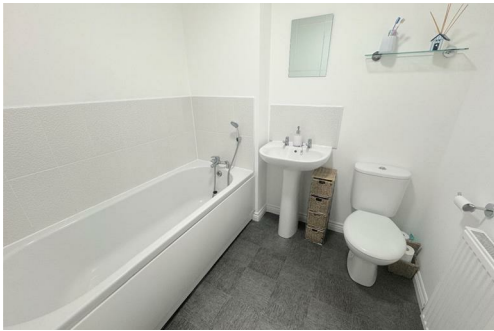
The property has easily maintained gardens to front and rear. The front area is enclosed by wrought iron railings with matching personal gate leading to the property. The enclosed rear garden enjoys a sunny aspect and has a paved area with inset lighting, gated access to rear.

## GARAGE

Can be found to the side of the property with a two car driveway. This area is approached via a private driveway leading from Chester Road. With up and over door.

## NB

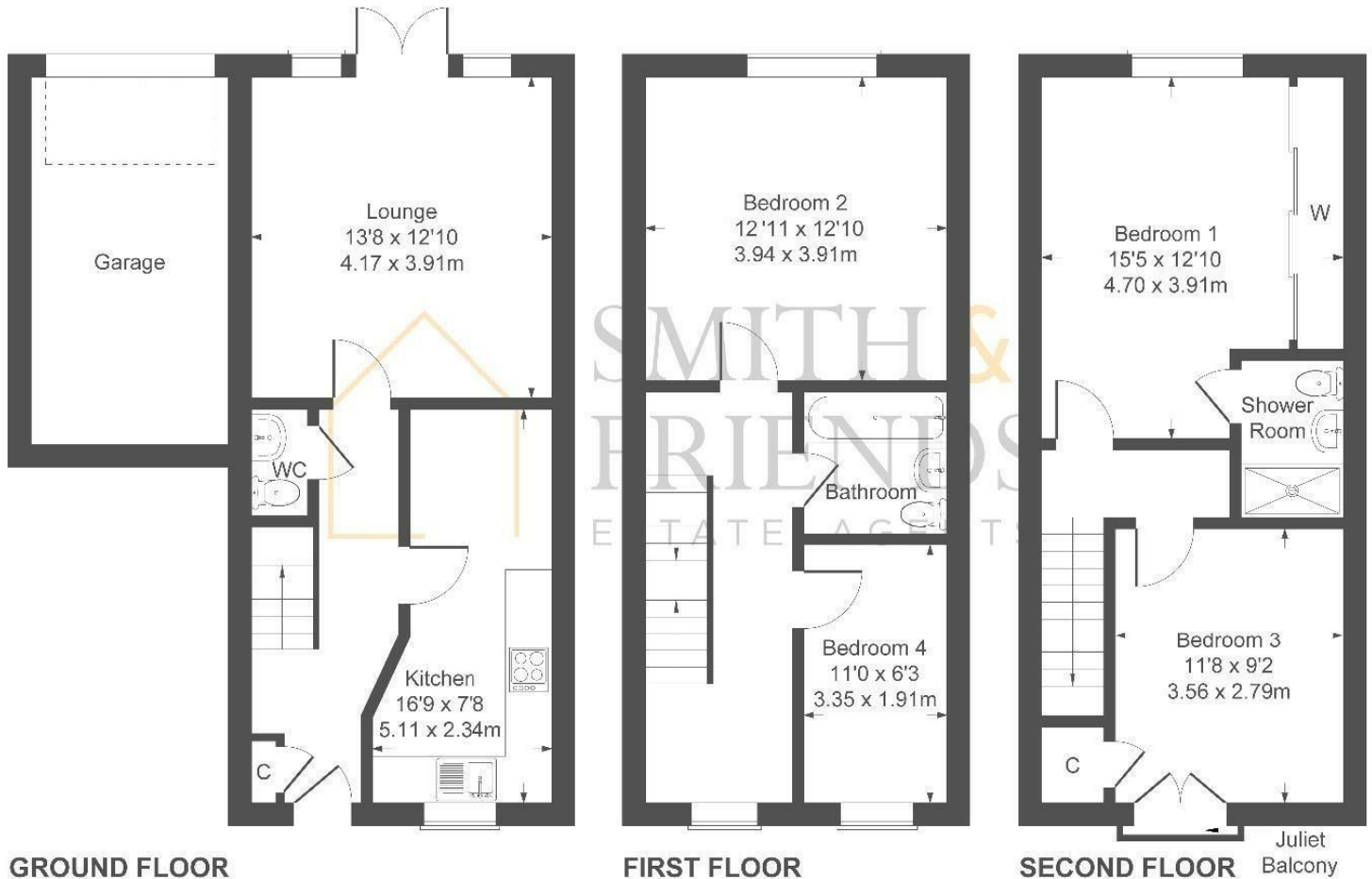
Floorplans and title plans are for illustrative purposes only. All measurements, walls, doors, window fittings and appliances, their sizes and locations, are approximate only. They cannot be regarded as being a representation by the seller, nor their agent.



Energy Efficiency Rating		
	Current	Potential
Very energy efficient - lower running costs		
(92 plus) A		88
(81-91) B		
(69-80) C	77	
(55-68) D		
(39-54) E		
(21-38) F		
(1-20) G		
Not energy efficient - higher running costs		
England & Wales		EU Directive 2002/91/EC

## Raby Road

Approximate Gross Internal Area  
1190 sq ft - 110 sq m



Not to Scale. Produced by The Plan Portal 2025  
For Illustrative Purposes Only.

For clarification we wish to inform prospective purchasers that we have prepared these sales particulars as a general guide. We have not carried out a detailed survey, nor tested the services, appliances and specific fittings. Room sizes should not be relied upon for carpets and furnishings, if there are important matters which are likely to affect your decision to buy, please contact us before viewing the property. Smith & Friends Estate Agents can recommend financial services, surveying and conveyancing services to sellers and buyers. Smith & Friends Estate Agents staff may benefit from referral incentives relating to these services.

106 York Road, Hartlepool, TS26 9DE

01429 891100

hartlepool@smith-and-friends.co.uk

www.smith-and-friends.co.uk